



Tucannon River (PA 5-15) W.T. Wooten Wildlife Area

- Assessment and Conceptual Design
Project Update



Check Out The
Project Webpage

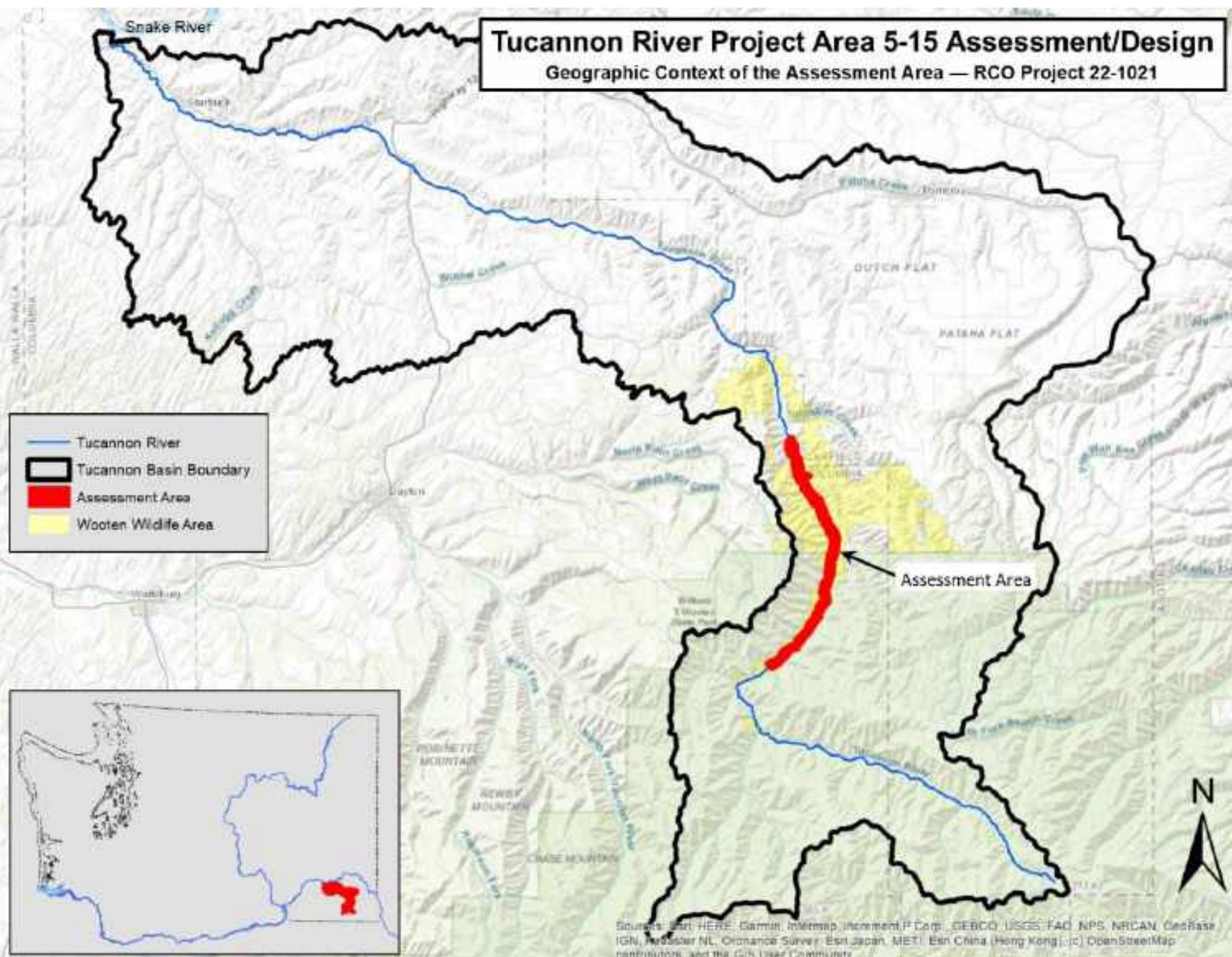


<https://tucannonriver.org/tucannon-pa5-15-assessment/>



Tucannon River Project Area 5-15 Assessment/Design

Geographic Context of the Assessment Area — RCO Project 22-1021



Sources: Esri, HERE, Garmin, Mapbox, DeLorme, Swatch, USGS, FAO, NPS, NRCAN, GeoBase, IGN, Kadaster NL, Ordnance Survey, Esri Japan, METI, Esri China (Hong Kong), Swatch, OpenStreetMap contributors, and the GIS User Community

Co-Management Model



CTUIR River Vision



**Riparian
Vegetation**



Connectivity



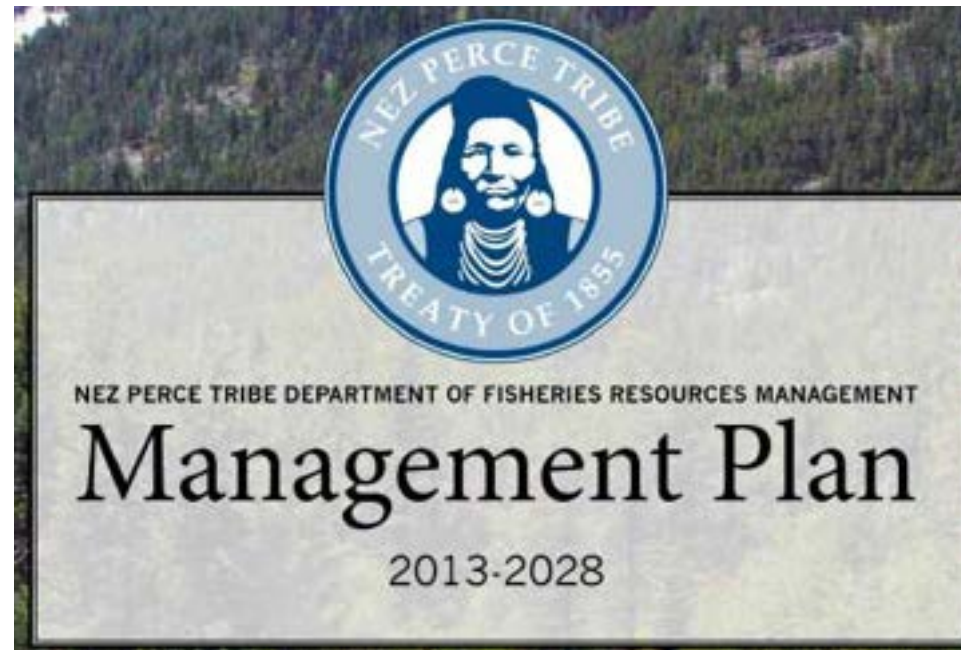
Hydrology



Geomorphology



**Aquatic
Biota**



W.T. Wooten Floodplain Management Plan (2014)

Washington Department of Fish and Wildlife

11/16/2013

Submitted to the Wooten PMP Team, Update Dec. 2014

Wooten Program: Bob Dore (Wooten Program Manager), Ken Oringer (Assistant Wooten Program Manager)

Floodplain Program: Rick Stansfield (Assistant Floodplain Program Manager), Dave Carl (Waterford Steward), Tom Johnson (Floodplain Biologist), Bruce Harner (Environmental Engineer)

Fish Program: Doug Mason (Wooten Fisheries Manager), Glen Stender (Wooten Fish Biologist)

Edited by: Mark Crutcher (Regional Habitat Program Manager)



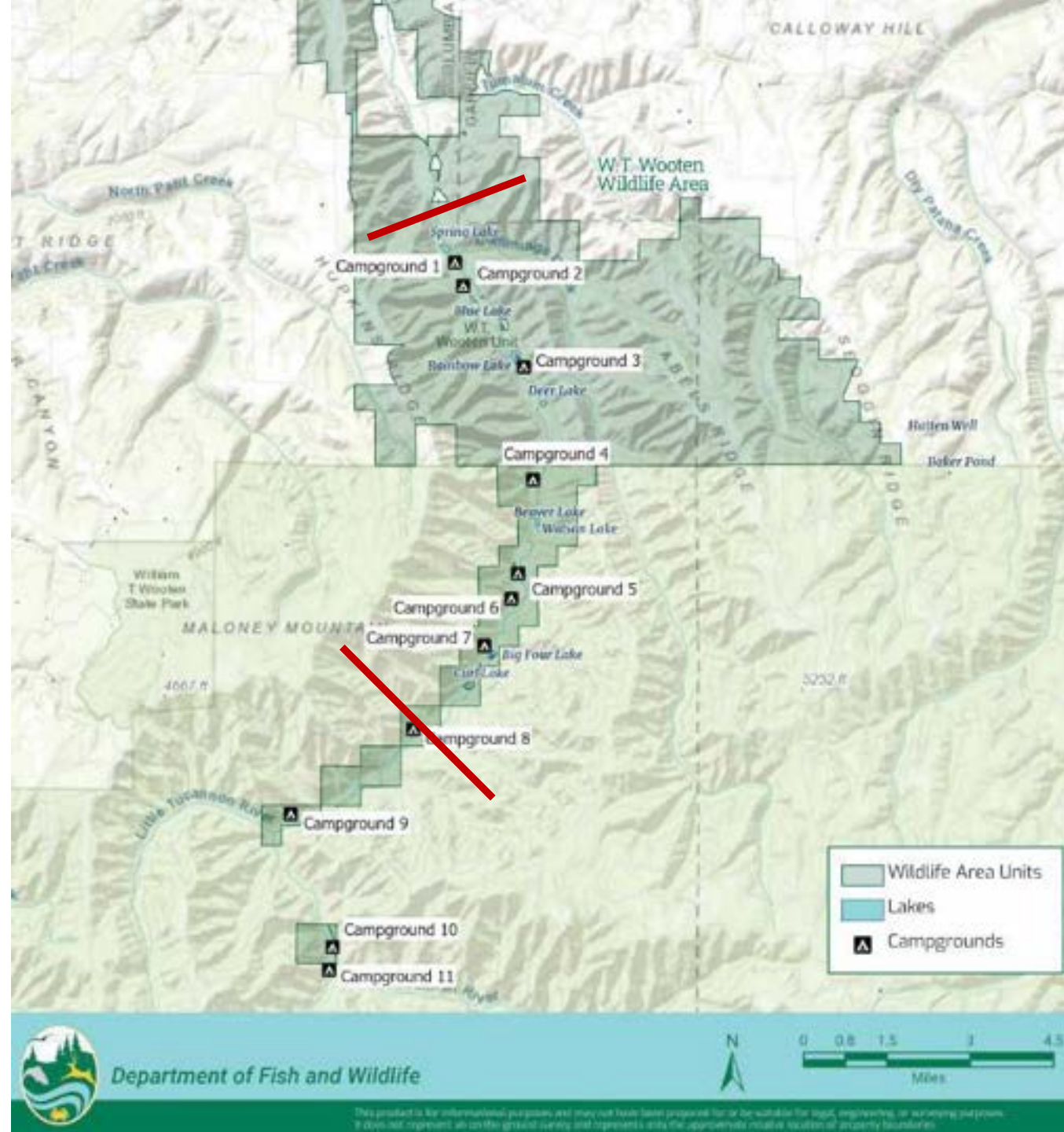


OUTLINE

- Introduction and Need
- Project Goals
- Approach
- Next Steps and Opportunity to Provide Input

Project Area Highlights

- ~10 miles of river
- Valley bottom ~ 1,000 feet wide
- 8 lakes in floodplain (not including Camp Wooten)
- 8 campgrounds
- Tucannon Fish Hatchery
- Full road access along valley



The Times

.com

SERVING WAITSBURG, DAYTON AND THE TOUCHET VALLEY

HERE FISHY, FISHY, FISHY...

OPENING DAY DRAWS CROWDS TO TUCANNON LAKES SUNDAY

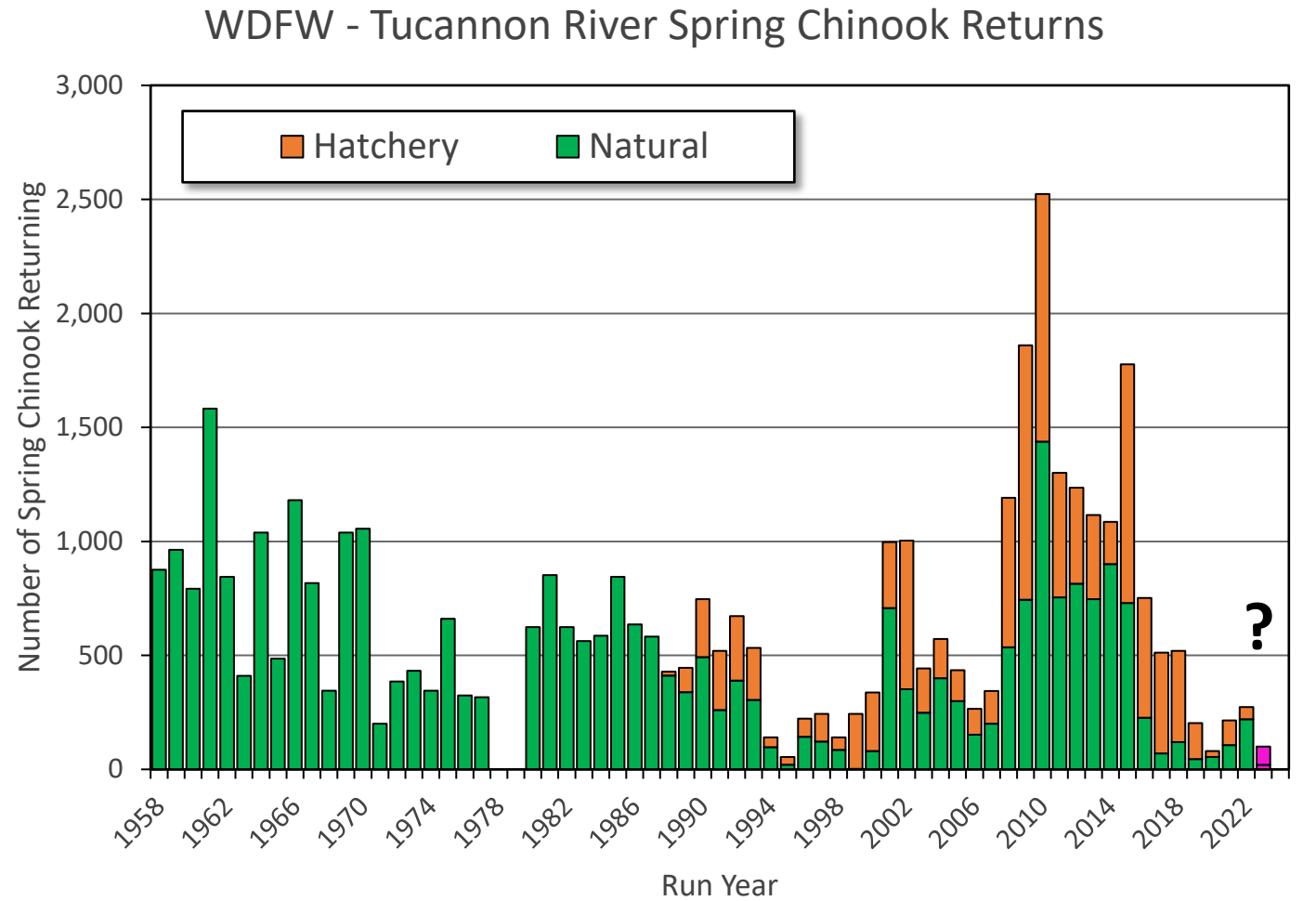


Project Area History

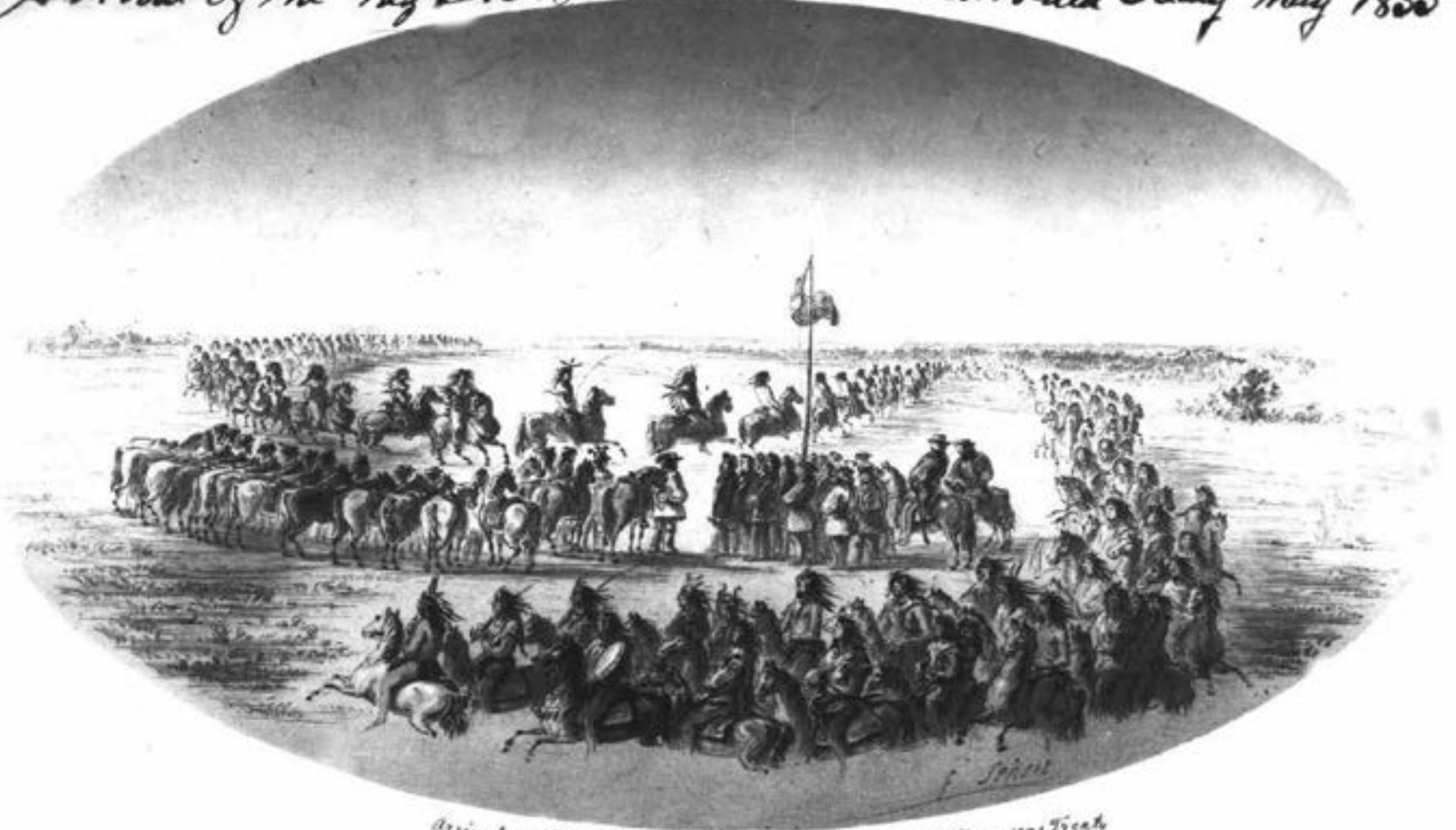
- Tucannon R. is the ancestral boundary of the Umatilla and Nez Perce Tribes
- Homesteading and logging period (late 1800s-early 1900s)
- WDFW acquires land (1941-1943)
- Lakes constructed in compensation for Lower Snake Dams (1950s)
- Road improvements and recreational uptick (1970s)
- Restoration period (1990s-present)



Action Needed: Chinook Reaching Quasi-Extinction Status



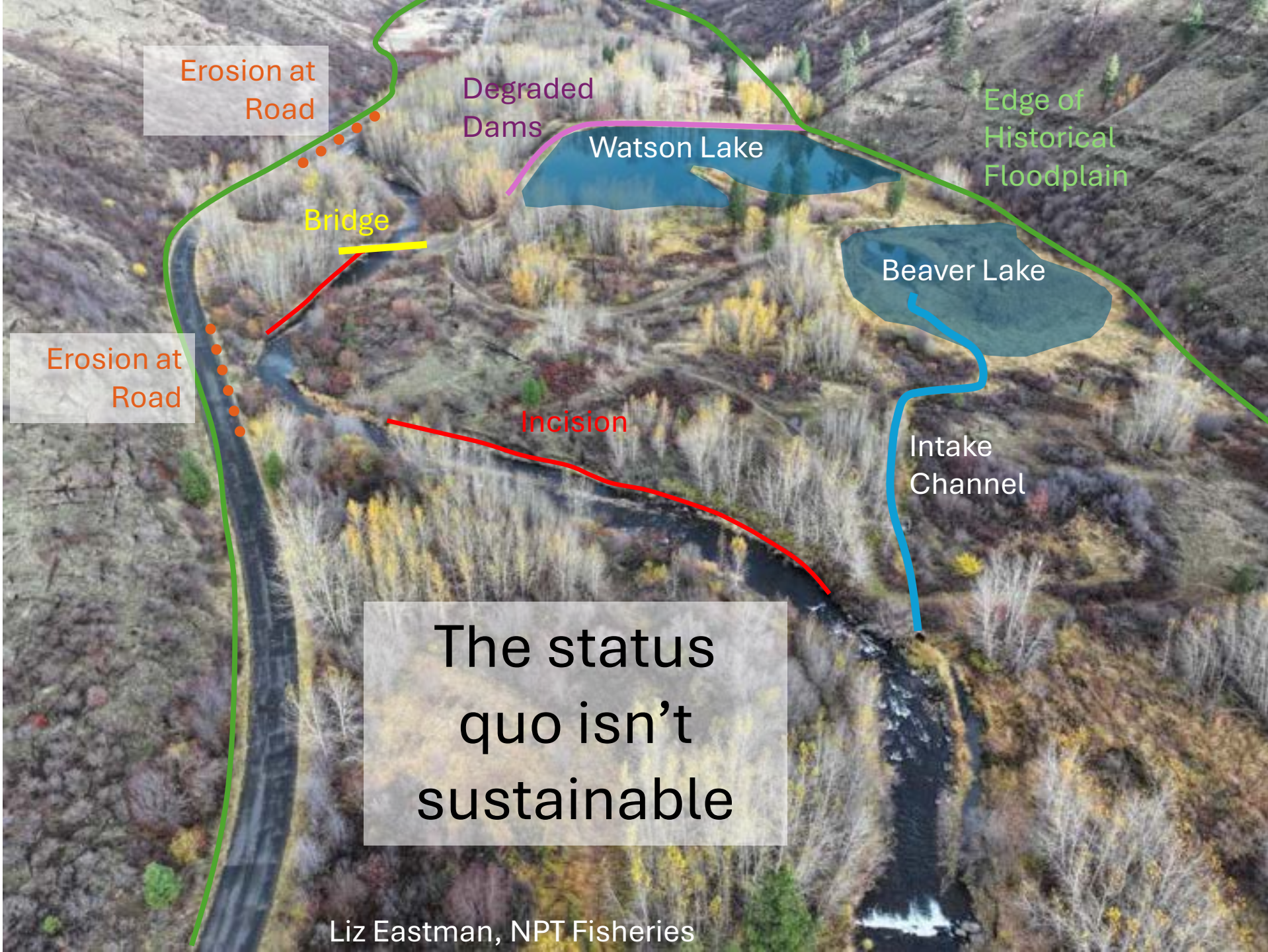
Arrival of the Nez Perce Indians at Walla Walla Treaty May 1855



*Arrival of the Nez Perce Indians to the Walla Walla Treaty
Aug 26 1855*

"...the right of **taking fish** at all usual and accustomed places... together with the privilege of **hunting, gathering roots and berries**, and pasturing their horses and cattle upon open and unclaimed land." (1855 NPT Treaty, Article 3)





Erosion at Road

Degraded Dams

Edge of Historical Floodplain

Watson Lake

Bridge

Beaver Lake

Erosion at Road

Incision

Intake Channel

The status quo isn't sustainable

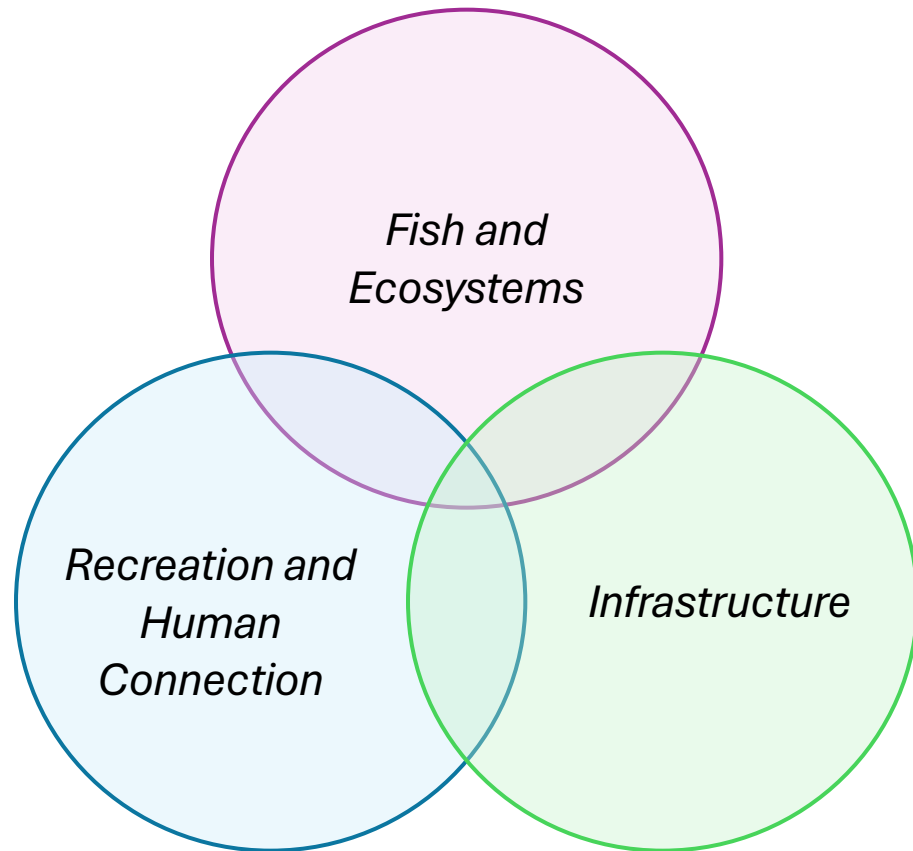
Algae Blooms



Large Floods



Comprehensive, Multi-Use Strategy Needed



Some Considerations

- Urgency for salmon recovery
- Long-term investments
- Needs to be sustainable for land managers (WDFW)
- Climate change is a disruptor
- Community input is critical

Project Vision



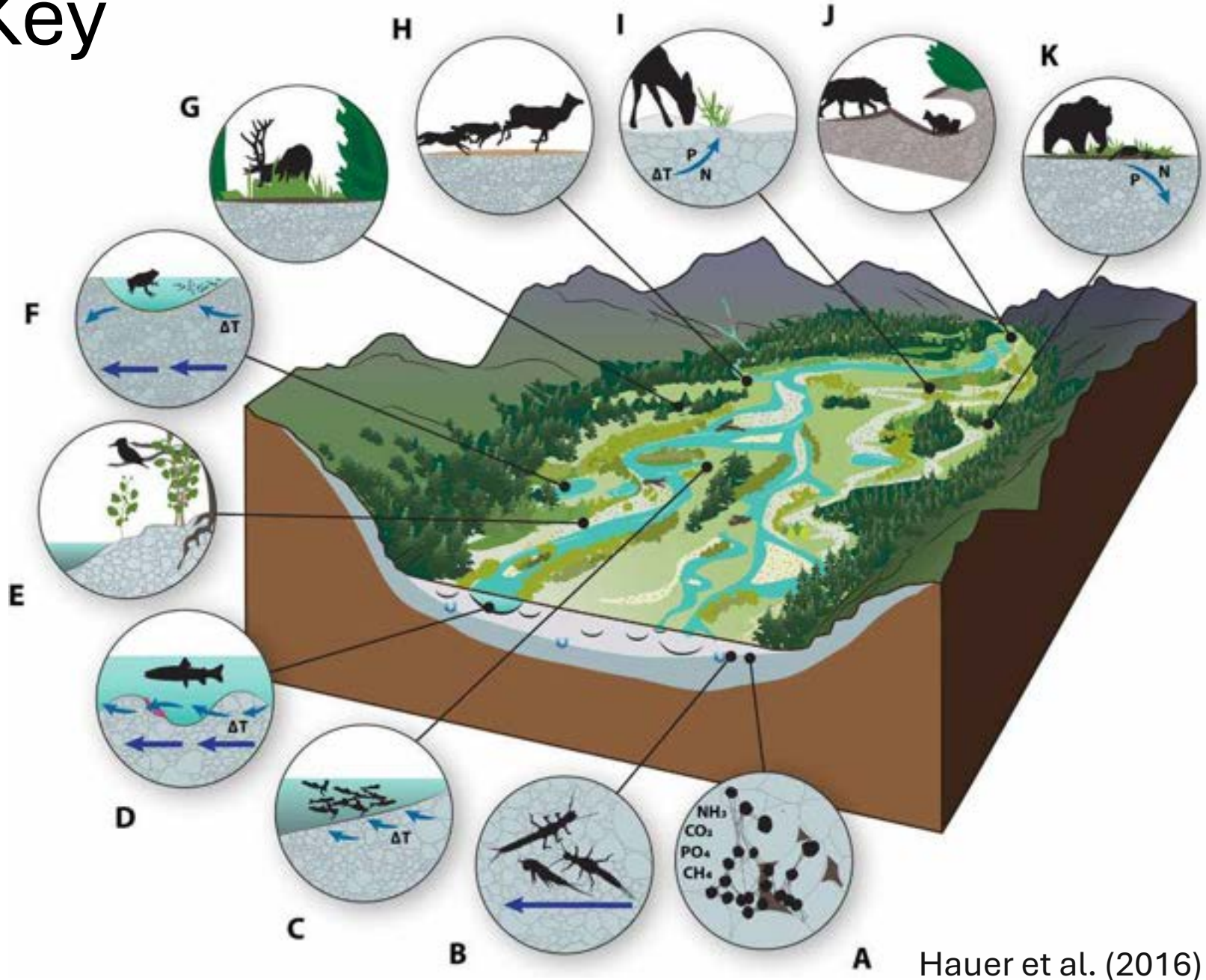
Restore physical and ecological floodplain function to benefit key fish and aquatic species, while broadening and enhancing recreational opportunities, through coordinated planning and conceptual restoration designs for the floodplain and adjacent lands of WT Wooten Wildlife Area.

Project Goals

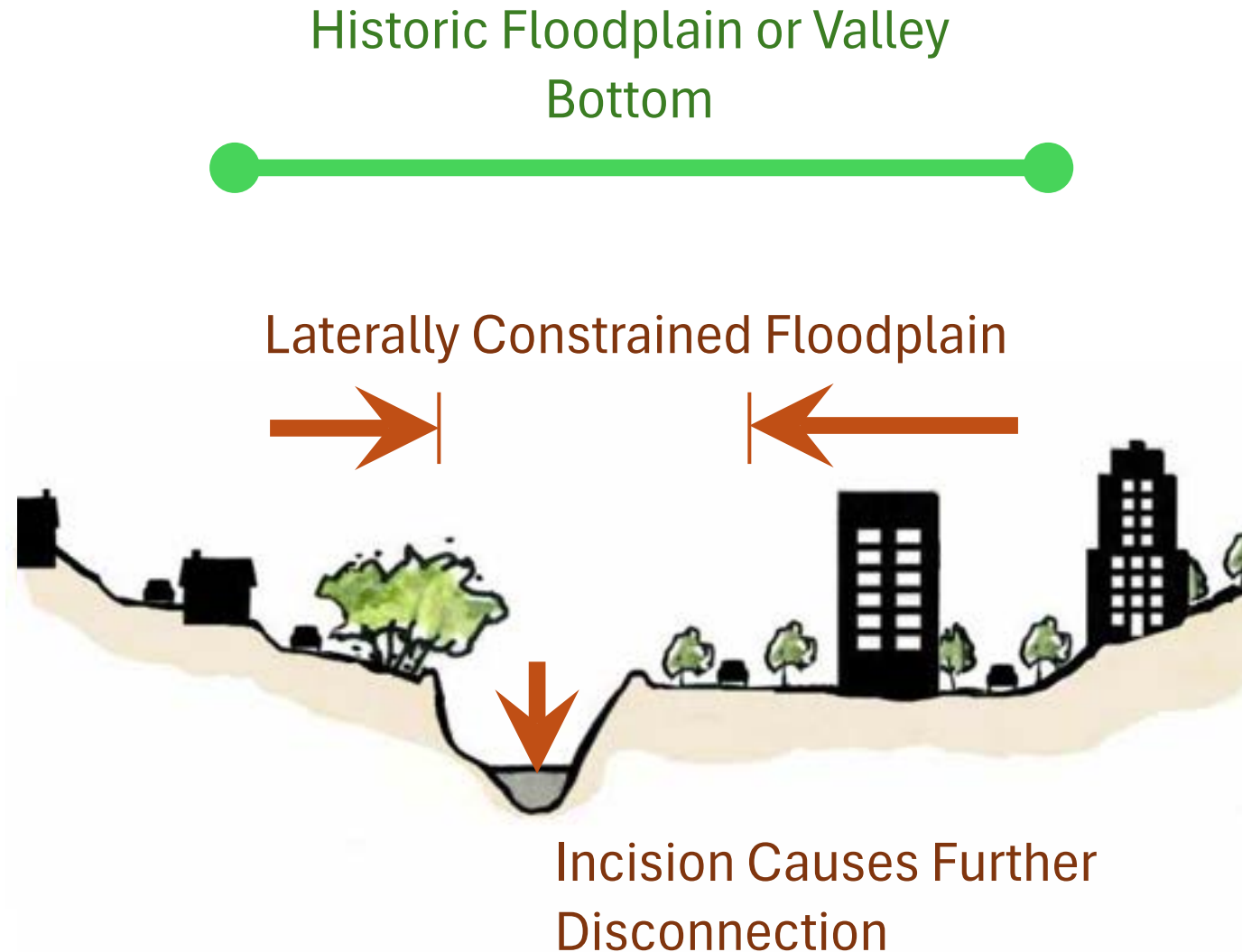
- **Floodplain Infrastructure:** Assess the impacts of floodplain confining infrastructure on listed salmonids habitat, as well as other aquatic species.
- **Lakes Management:** Identify management needs and potential alternatives for each of the Tucannon Lakes.
- **River Assessment and Design:** Develop an assessment and accompanying conceptual designs to prioritize the restoration of physical and ecological functions of the river, floodplain, and riparian habitats.
- **Salmon Recovery:** Restoration actions will maximize recovery potential for ESA-listed spring Chinook, summer steelhead, and bull trout on the Tucannon River.
- **Recreational Uses and Benefits:** Restoration actions will account for the multi-use nature of the project area.
- **Actionable Plan:** Prioritized conceptual designs will provide direction to the co-managers for implementation of restoration construction projects.



Floodplains are Key



Lateral and Vertical Disconnection of Floodplains

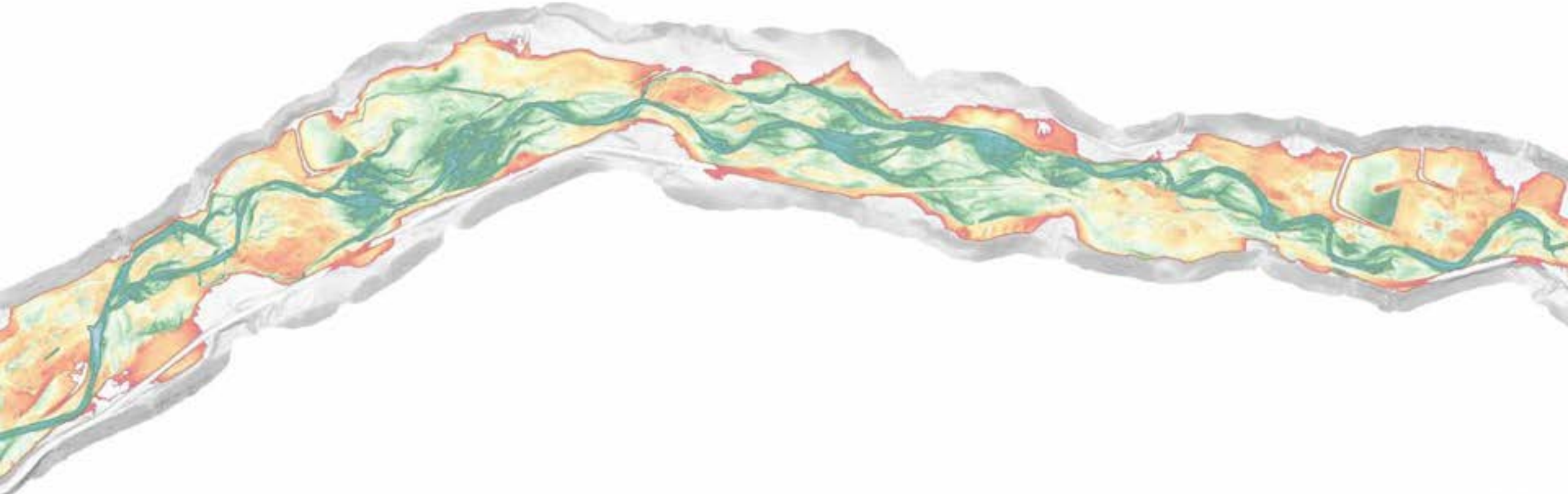


State of the Floodplain

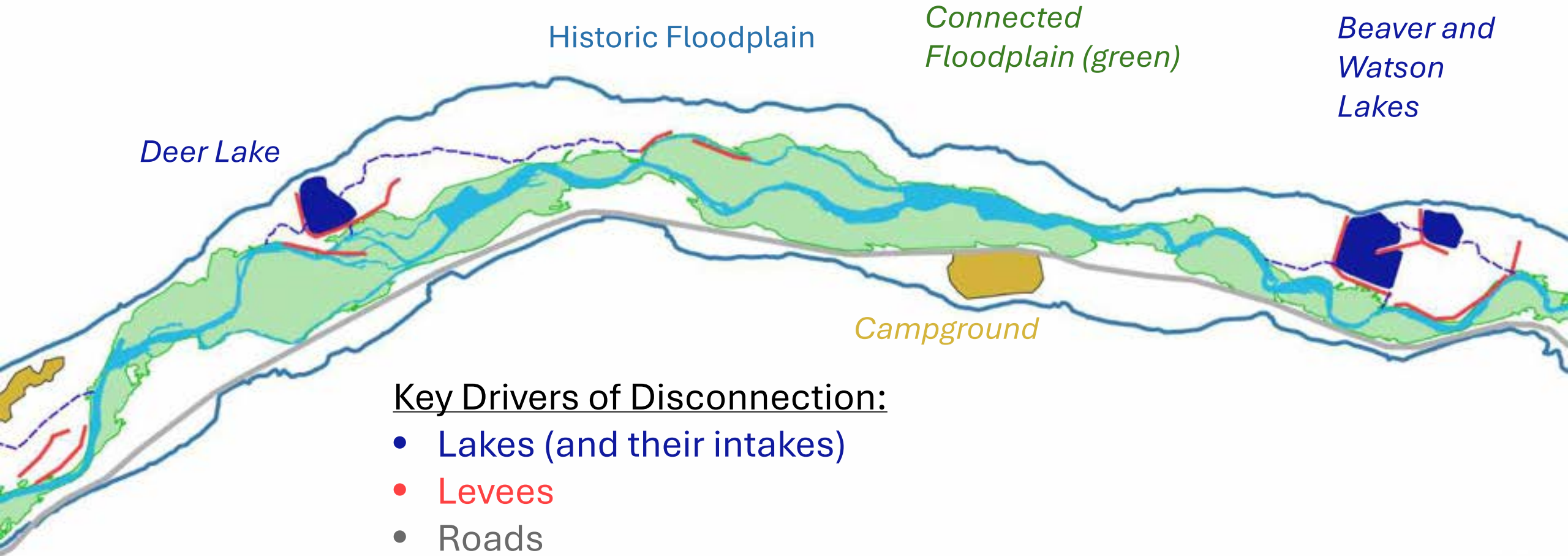
Yellows/Reds– Above regular flooding levels

Greens – At or below regular flood levels

Blues – At or below river level



State of the Floodplain

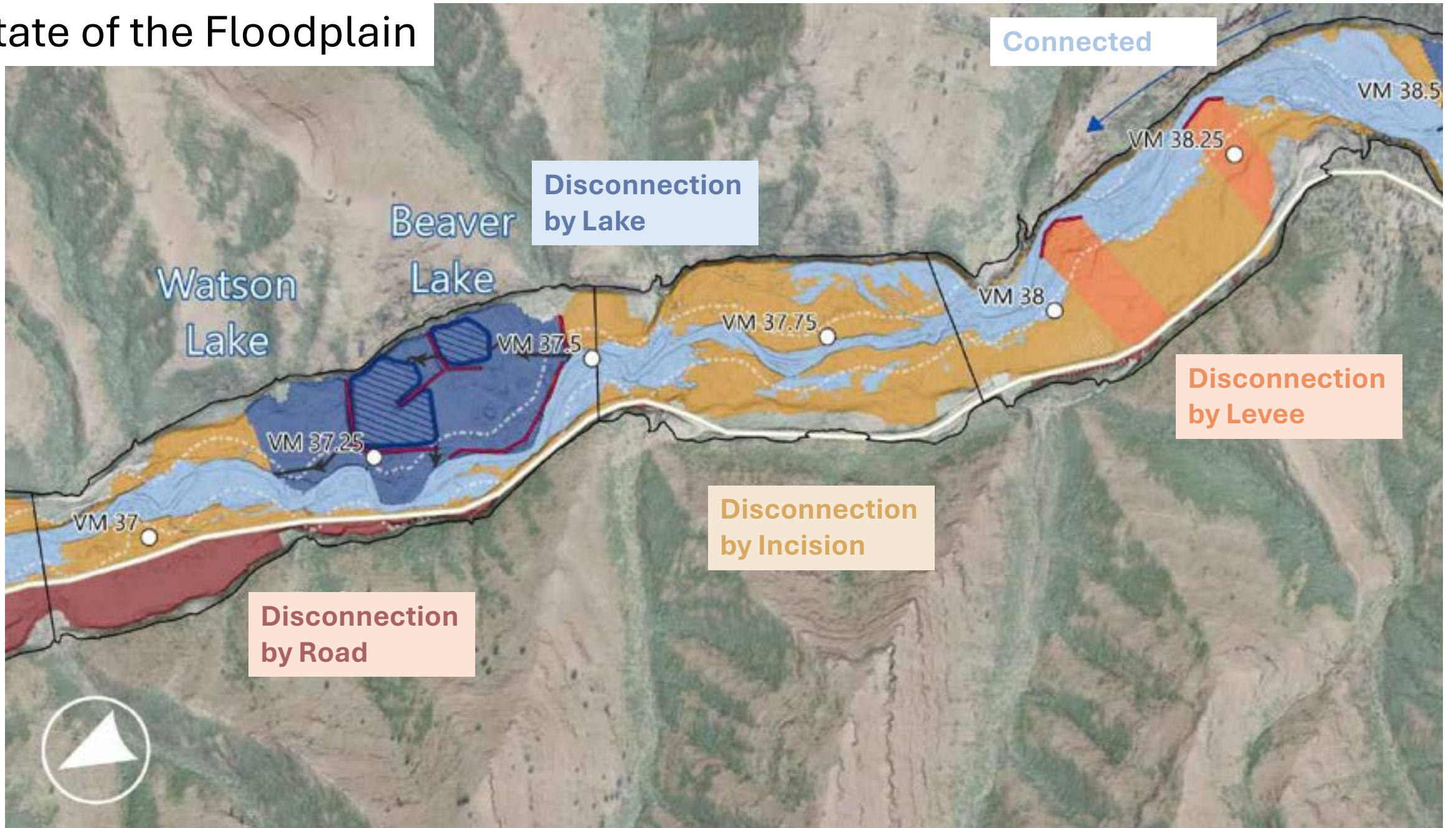


Key Drivers of Disconnection:

- Lakes (and their intakes)
- Levees
- Roads
- Stream incision

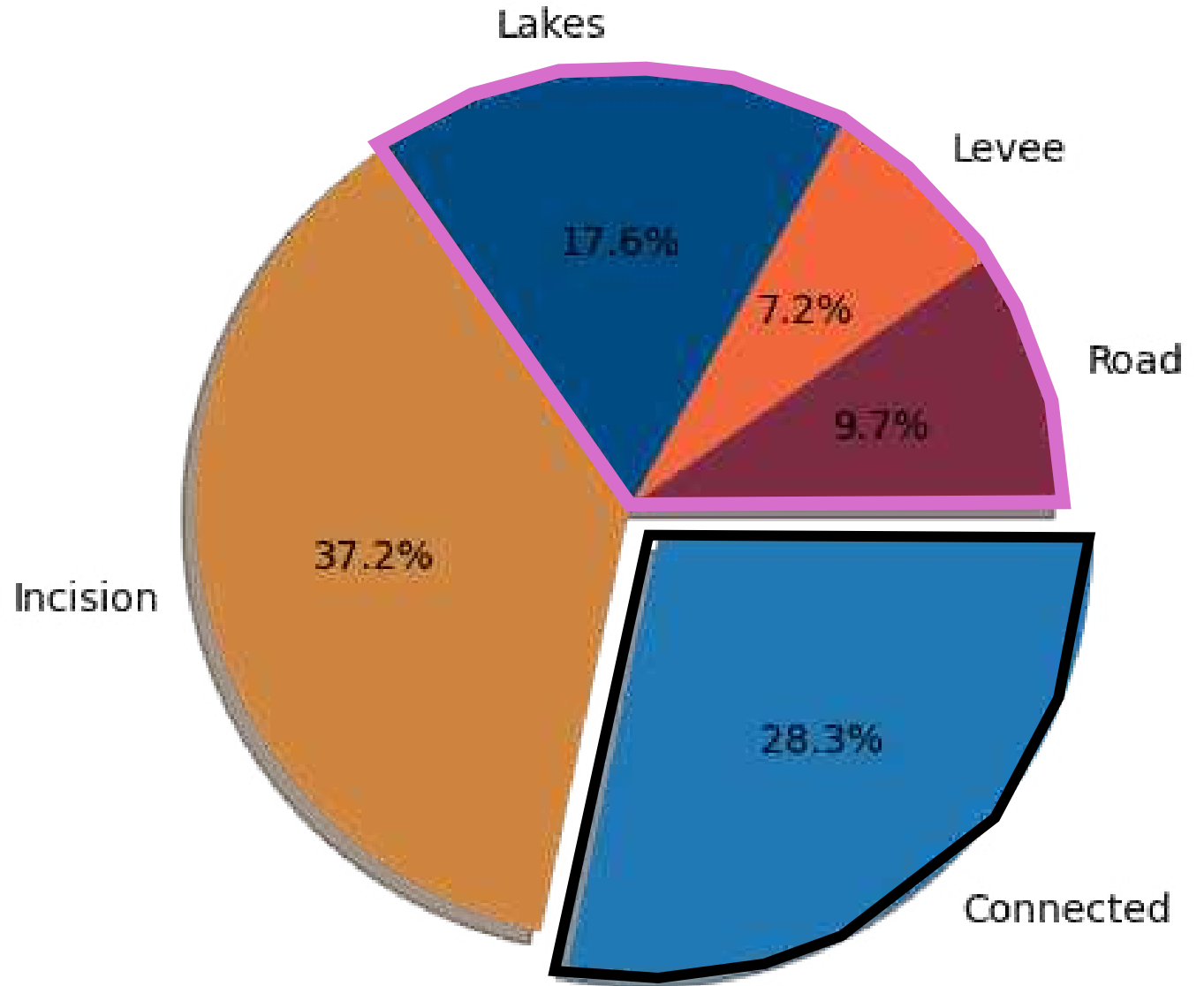


State of the Floodplain



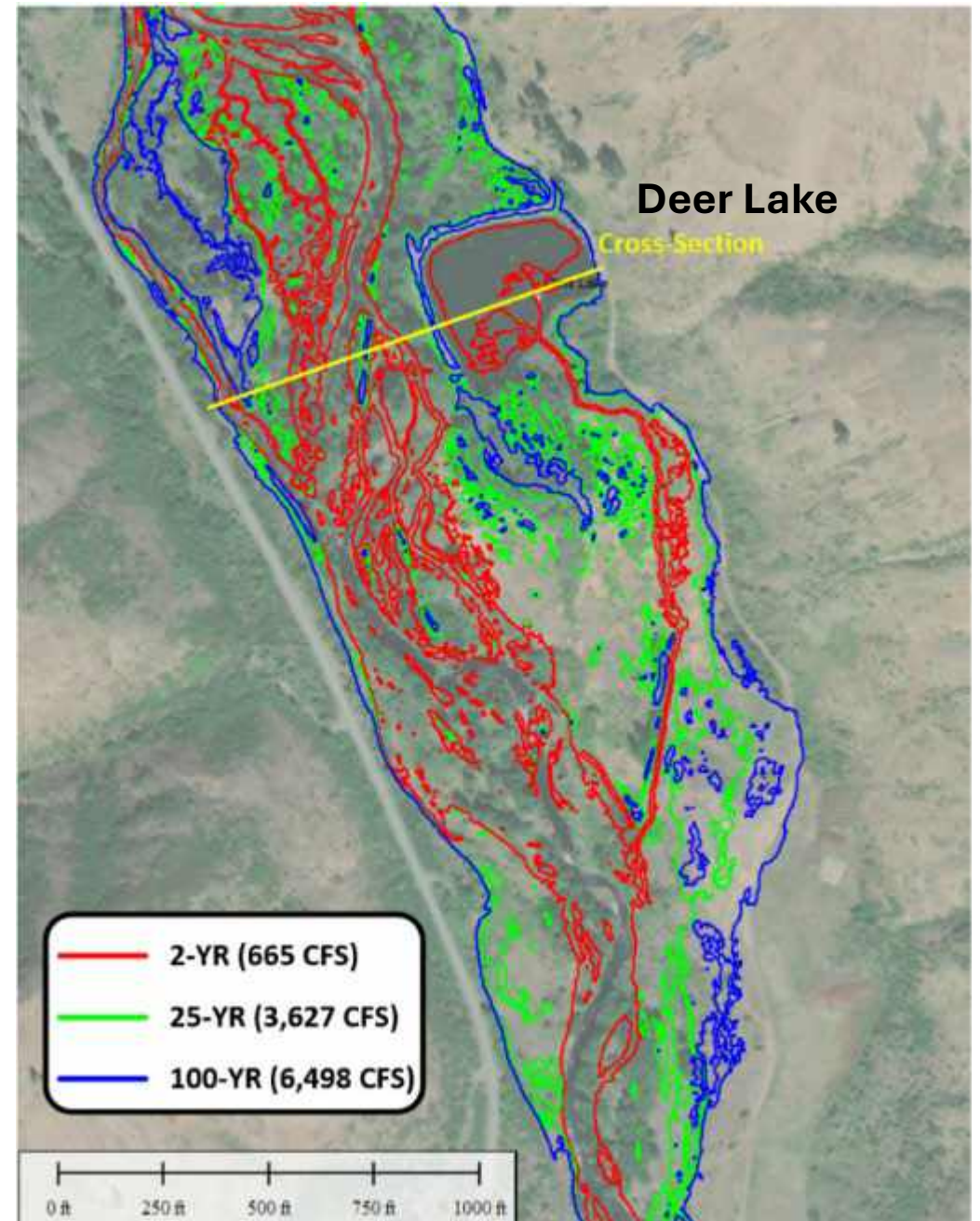
State of the Floodplain

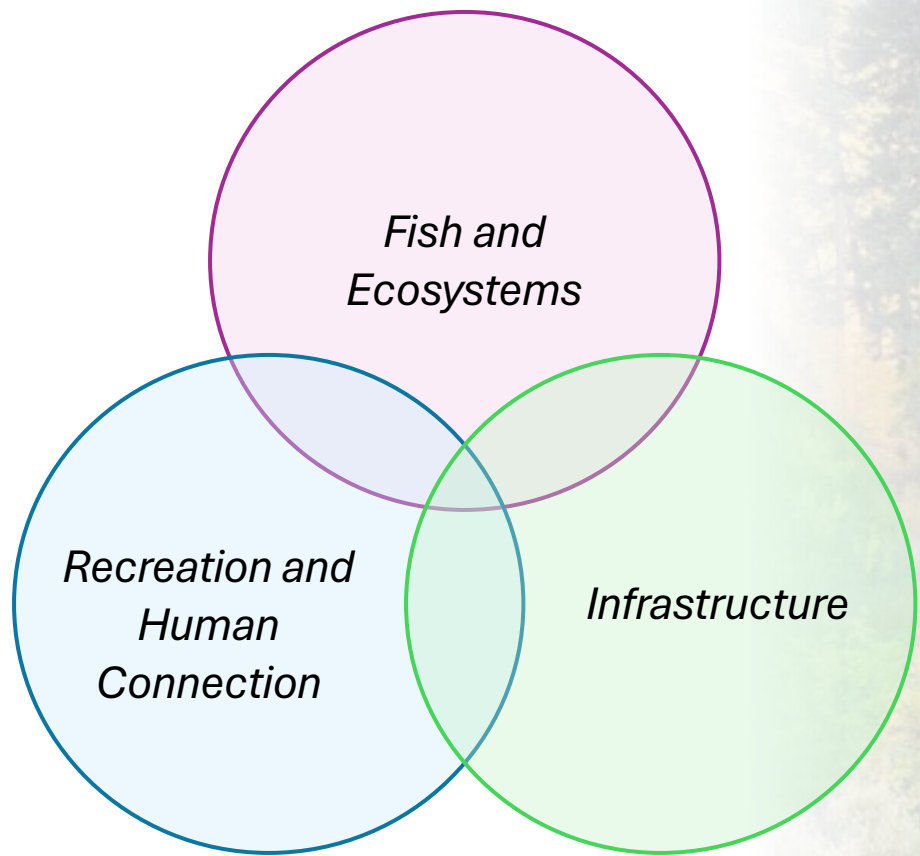
- Floodplain is ~30% of its historical extent
- Lakes, levees, and road infrastructure disconnect ~35% of historical floodplain
- ~37% of historical floodplain is vertically disconnected



Lake Issues and Needs

- **Out of compliance with dam safety regulations - 6 of 8 lakes**
- **Direct flooding from river - 4 of 8 lakes**
- **Require intake or outflow infrastructure upgrades - 6 of 8 lakes**





Key Point

We have an opportunity to rebuild the river, ecosystems, and recreational infrastructure so that all function together for the benefit of current and future generations



Project Approach

Assessments (through early 2025)

- Lakes and Infrastructure
- Ecosystem and Floodplain
- Recreation

Conceptual Alternatives

(target completion: end of 2025)

Public Meetings and Input

(2 more meetings in the assessment and alternatives process)

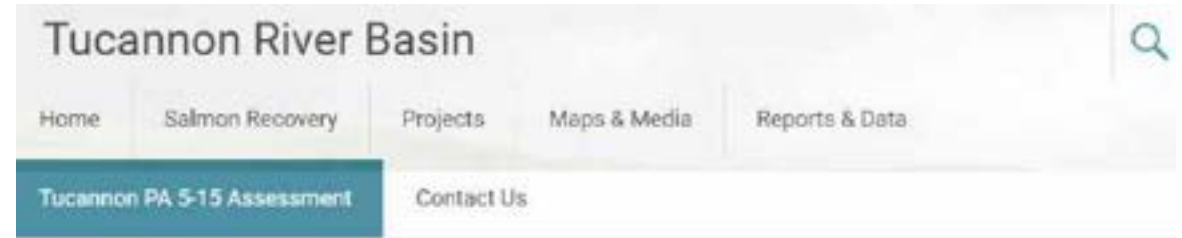


Check Out Our Webpage

<https://tucannonriver.org/tucannon-pa5-15-assessment/>



- Watch a drone fly-through of the project area
- Fill out a survey!
- Info on Future Public Meetings
- Ask questions and provide feedback after attending this meeting



Tucannon PA 5-15 Assessment

The multi-purpose assessment will develop a list of alternatives for the various confining infrastructure and determine the degree of those effects on limiting factors including channel complexity, floodplain connectivity, stream power, and pool development throughout this reach.

Co-manager analysis of those multi-purpose alternatives will be used to develop conceptual designs that focus on providing a major uplift for declining ESA-listed Snake River Spring Chinook, summer steelhead and bull trout populations. Once complete the conceptual designs for the 10-mile reach of the Tucannon River will provide a future pathway to better multi-use management while reducing future maintenance and flood risk for the remaining floodplain infrastructure.



<https://tucannonriver.org/tucannon-pa5-15-assessment/>

- **Fill out a survey!**
- **Info on Future Public Meetings**
- **Ask questions and provide feedback after attending this meeting**
- **Access a recording of this meeting**



Thank You!